

NOTES:
 1) FOR OPTIMAL REINFORCEMENT PLACEMENT IN THE NUDURA FORM, SPACING OF HORIZONTAL REINFORCEMENT TO BE SPECIFIED AT 18" (457mm) O.C. AND VERTICAL REINFORCEMENT TO BE SPECIFIED AT MULTIPLES OF 8" (203mm) O.C. REFER TO NUDURA REINFORCEMENT PLACEMENT DETAILS.

This detail is for general informational purposes only. The project design professional determines, in its sole discretion, whether this detail or a functionally equivalent detail is best suited for the project with respect to any architecture, engineering, and design requirements, including any local building code requirements. If this document is not reviewed and the product is not approved for use by a licensed design professional, the customer agrees that the detail may contain substantive flaws requiring correction, and hereby releases Tremco CPG Inc. from any and all liability related to the design and installation of the product. This detail is subject to change without notice. Contact Tremco to ensure you have the most recent version.

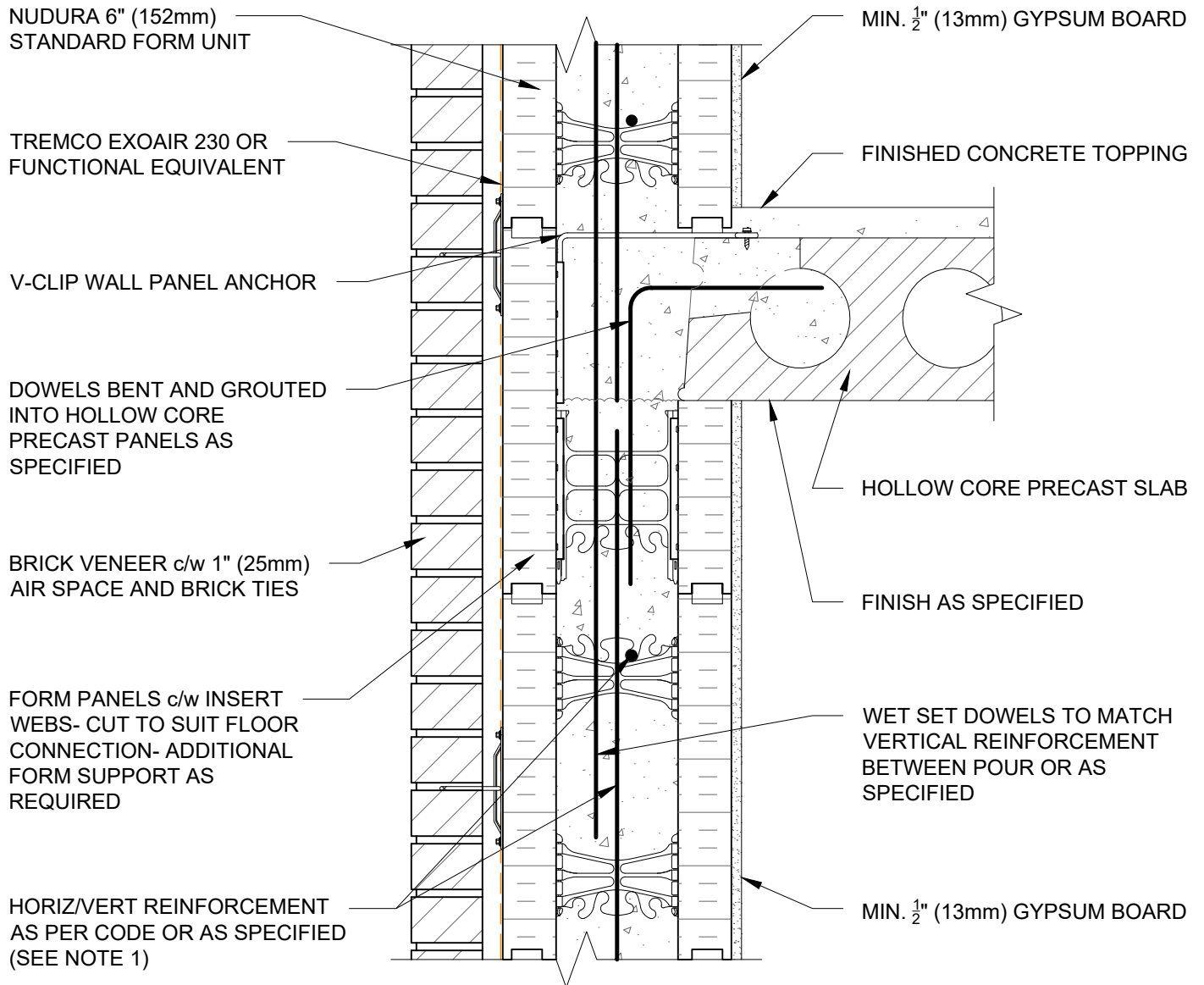
Non-Combustible Construction - Intermediate Floor



Detail: Nudura 6" (152mm) Form Unit, Hollow Core Precast Slab, Intermediate Floor Connection, Exterior Bearing Wall Detail, Brick Veneer Finish		
Drawn by: JN	Checked by: KS	Scale: 1:8
Revision #: 06	Revised by: KAB	Date: 3/13/2024

File Name:
 D6A05





NOTES:
 1) FOR OPTIMAL REINFORCEMENT PLACEMENT IN THE NUDURA FORM, SPACING OF HORIZONTAL REINFORCEMENT TO BE SPECIFIED AT 18\"/>

This detail is for general informational purposes only. The project design professional determines, in its sole discretion, whether this detail or a functionally equivalent detail is best suited for the project with respect to any architecture, engineering, and design requirements, including any local building code requirements. If this document is not reviewed and the product is not approved for use by a licensed design professional, the customer agrees that the detail may contain substantive flaws requiring correction, and hereby releases Tremco CPG Inc. from any and all liability related to the design and installation of the product. This detail is subject to change without notice. Contact Tremco to ensure you have the most recent version.

Non-Combustible Construction - Intermediate Floor



Detail: Nudura 6" (152mm) Form Unit, Hollow Core Precast Slab, Intermediate Floor Connection, Exterior Non-Bearing Wall Detail, Brick Veneer Finish		
Drawn by: JN	Checked by: KS	Scale: 1:8
Revision #: 06	Revised by: KAB	Date: 3/13/2024

File Name:
D6A06



NUDURA 6" (152mm)
STANDARD FORM UNIT

WET SET DOWELS TO MATCH
VERTICAL REINFORCEMENT
BETWEEN POUR OR AS
SPECIFIED

TREMCO EXOAIR 230 OR
FUNCTIONAL EQUIVALENT

V-CLIP WALL PANEL ANCHOR

EXTERIOR FINISH AS SPECIFIED

FORM PANELS c/w INSERT
WEBS- CUT TO SUIT FLOOR
CONNECTION- ADDITIONAL
FORM SUPPORT AS
REQUIRED

HORIZ/VERT REINFORCEMENT
AS PER CODE OR AS
SPECIFIED (SEE NOTE 1)

MIN. 1/2" (13mm) GYPSUM BOARD

FINISHED CONCRETE
TOPPING

HOLLOW CORE
PRECAST SLAB

FINISH AS SPECIFIED

MASONITE BEARING PAD

DOWELS FIELD BENT AND
GROUTED INTO SHEAR KEY
JOINT BETWEEN PANELS AS
SPECIFIED

MIN. 1/2" (13mm) GYPSUM BOARD

NOTES:
1) FOR OPTIMAL REINFORCEMENT PLACEMENT IN THE NUDURA FORM,
SPACING OF HORIZONTAL REINFORCEMENT TO BE SPECIFIED AT 18"
(457mm) O.C. AND VERTICAL REINFORCEMENT TO BE SPECIFIED AT
MULTIPLES OF 8" (203mm) O.C. REFER TO NUDURA REINFORCEMENT
PLACEMENT DETAILS.

This detail is for general informational purposes only. The project design professional determines, in its sole discretion, whether this detail or a functionally equivalent detail is best suited for the project with respect to any architecture, engineering, and design requirements, including any local building code requirements. If this document is not reviewed and the product is not approved for use by a licensed design professional, the customer agrees that the detail may contain substantive flaws requiring correction, and hereby releases Tremco CPG Inc. from any and all liability related to the design and installation of the product. This detail is subject to change without notice. Contact Tremco to ensure you have the most recent version.

Non-Combustible Construction - Intermediate Floor

Detail: Nudura 6" (152mm) Form Unit, Hollow Core Precast Slab, Intermediate Floor
Connection, Exterior Bearing Wall Detail, Exterior Finish As Specified

File Name:

Drawn by: TVC

Checked by: KS

Scale: 1:8

D6A11

Revision #: 05

Revised by: KAB

Date: 3/13/2024



Nudura Technical Support: 866-468-6299
International: +1 705-726-9499

www.tremcocpg.com



Construction Products Group

NUDURA 6" (152mm)
STANDARD FORM UNIT

MIN. 1/2" (13mm) GYPSUM BOARD

V-CLIP WALL PANEL ANCHOR

FINISHED CONCRETE TOPPING

DOWELS BENT AND GROUTED
INTO HOLLOW CORE PRECAST
PANELS AS SPECIFIED

TREMCO EXOAIR 230 OR
FUNCTIONAL EQUIVALENT

HOLLOW CORE PRECAST SLAB

EXTERIOR FINISH AS
SPECIFIED

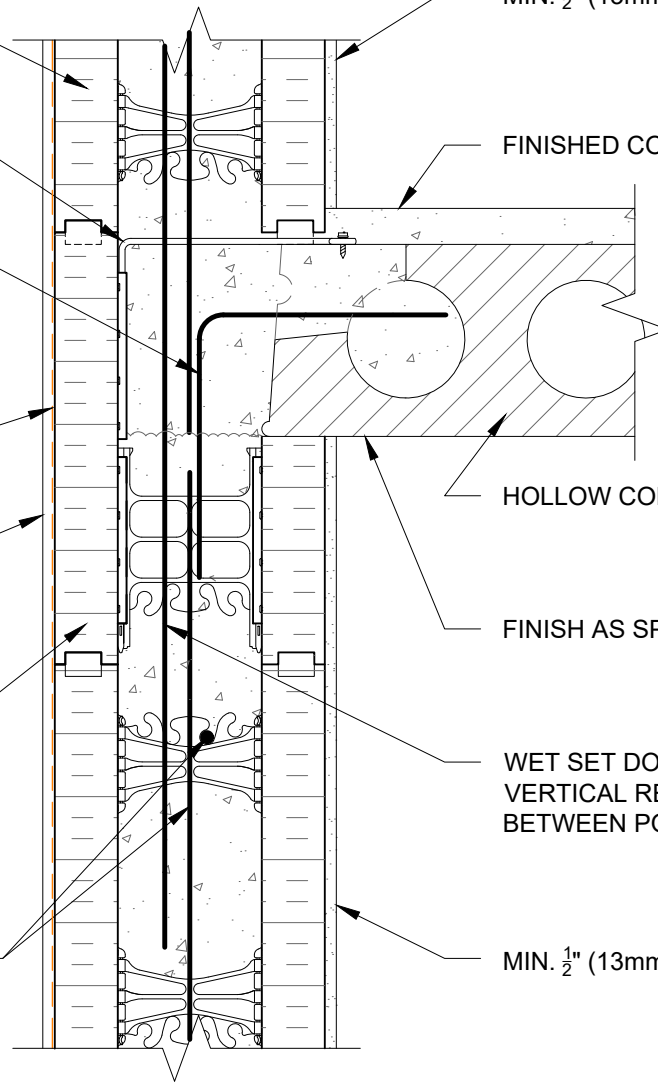
FINISH AS SPECIFIED

FORM PANELS c/w INSERT
WEBS- CUT TO SUIT FLOOR
CONNECTION- ADDITIONAL
FORM SUPPORT AS
REQUIRED

WET SET DOWELS TO MATCH
VERTICAL REINFORCEMENT
BETWEEN POUR OR AS SPECIFIED

HORIZ/VERT REINFORCEMENT
AS PER CODE OR AS SPECIFIED
(SEE NOTE 1)

MIN. 1/2" (13mm) GYPSUM BOARD



NOTES:
1) FOR OPTIMAL REINFORCEMENT PLACEMENT IN THE NUDURA FORM,
SPACING OF HORIZONTAL REINFORCEMENT TO BE SPECIFIED AT 18"
(457mm) O.C. AND VERTICAL REINFORCEMENT TO BE SPECIFIED AT
MULTIPLES OF 8" (203mm) O.C. REFER TO NUDURA REINFORCEMENT
PLACEMENT DETAILS.

This detail is for general informational purposes only. The project design professional determines, in its sole discretion, whether this detail or a functionally equivalent detail is best suited for the project with respect to any architecture, engineering, and design requirements, including any local building code requirements. If this document is not reviewed and the product is not approved for use by a licensed design professional, the customer agrees that the detail may contain substantive flaws requiring correction, and hereby releases Tremco CPG Inc. from any and all liability related to the design and installation of the product. This detail is subject to change without notice. Contact Tremco to ensure you have the most recent version.

Non-Combustible Construction - Intermediate Floor



Detail: Nudura 6" (152mm) Form Unit, Hollow Core Precast Slab, Intermediate Floor Connection, Exterior Non-Bearing Wall Detail, Exterior Finish As Specified		
Drawn by: TVC	Checked by: KS	Scale: 1:8
Revision #: 05	Revised by: KAB	Date: 3/13/2024

File Name:
D6A12



NUDURA 6" (152mm)
STANDARD FORM UNIT

TREMCO EXOAIR 230 OR
FUNCTIONAL EQUIVALENT

WET SET DOWELS TO
MATCH VERTICAL
REINFORCEMENT
BETWEEN POUR OR
AS SPECIFIED

HORIZ/VERT REINFORCEMENT
AS PER CODE OR AS SPECIFIED
(SEE NOTE 1)

BRICK VENEER c/w
1" (25mm) AIR
SPACE AND BRICK
TIES

MIN. 1/2" (13mm) GYPSUM BOARD

FORM PANELS c/w INSERT
WEBS- CUT TO SUIT FLOOR
CONNECTION- ADDITIONAL
FORM SUPPORT AS REQUIRED

ALLOW FLOOR SLAB TO REST
ON TO BEARING WALL
CONCRETE

PROPRIETARY STEEL
JOIST FLOOR SYSTEM

CEILING FINISH AS PER STEEL
JOIST MANUFACTURERS
SPECIFICATION (SEE NOTE 2)

NOTES:

1) FOR OPTIMAL REINFORCEMENT PLACEMENT IN THE NUDURA FORM, SPACING OF HORIZONTAL REINFORCEMENT TO BE SPECIFIED AT 18" (457mm) O.C. AND VERTICAL REINFORCEMENT TO BE SPECIFIED AT MULTIPLES OF 8" (203mm) O.C. REFER TO NUDURA REINFORCEMENT PLACEMENT DETAILS.

2) WHERE GYPSUM BOARD IS REQUIRED TO COMPLETE FIRE RATED ASSEMBLY, EPS FOAM KERF CUT TO ENABLE CEILING FINISH TO PROVIDE THERMAL BARRIER CONTACT TO CONCRETE)

This detail is for general informational purposes only. The project design professional determines, in its sole discretion, whether this detail or a functionally equivalent detail is best suited for the project with respect to any architecture, engineering, and design requirements, including any local building code requirements. If this document is not reviewed and the product is not approved for use by a licensed design professional, the customer agrees that the detail may contain substantive flaws requiring correction, and hereby releases Tremco CPG Inc. from any and all liability related to the design and installation of the product. This detail is subject to change without notice. Contact Tremco to ensure you have the most recent version.

Non-Combustible Construction - Intermediate Floor



Nudura Technical Support: 866-468-6299
International: +1 705-726-9499

Detail: Nudura 6" (152mm) Form Unit, Steel Joist Floor System, Intermediate Floor
Connection, Exterior Side Wall, Brick Veneer Finish

Drawn by: TVC

Checked by: KS

Scale: 1:8

Revision #: 05

Revised by: KAB

Date: 3/13/2024

File Name:

D6B05



Construction Products Group

www.tremcocpg.com

NUDURA 6" (152mm)
STANDARD FORM UNIT

TREMCO EXOAIR 230 OR
FUNCTIONAL EQUIVALENT

WET SET DOWELS TO
MATCH VERTICAL
REINFORCEMENT
BETWEEN POUR OR
AS SPECIFIED

HORIZ/VERT REINFORCEMENT
AS PER CODE OR AS SPECIFIED
(SEE NOTE 1)

BRICK VENEER c/w
1" (25mm) AIR SPACE
AND BRICK TIES

FORM PANELS c/w INSERT
WEBS- CUT TO SUIT FLOOR
CONNECTION- ADDITIONAL
FORM SUPPORT AS REQUIRED

ALLOW FLOOR SLAB TO REST
ON TO BEARING WALL
CONCRETE

EPS FOAM REMOVED AT JOIST
LOCATIONS ONLY TO ALLOW
JOIST PLACEMENT

PROPRIETARY STEEL
JOIST FLOOR SYSTEM

CEILING FINISH AS PER STEEL JOIST
MANUFACTURERS SPECIFICATION
(SEE NOTE 2)

MIN. 1/2" (13mm) GYPSUM BOARD

NOTES:

1) FOR OPTIMAL REINFORCEMENT PLACEMENT IN THE NUDURA FORM, SPACING OF HORIZONTAL REINFORCEMENT TO BE SPECIFIED AT 18" (457mm) O.C. AND VERTICAL REINFORCEMENT TO BE SPECIFIED AT MULTIPLES OF 8" (203mm) O.C. REFER TO NUDURA REINFORCEMENT PLACEMENT DETAILS.

2) WHERE GYPSUM BOARD IS REQUIRED TO COMPLETE FIRE RATED ASSEMBLY, EPS FOAM KERF CUT TO ENABLE CEILING FINISH TO PROVIDE THERMAL BARRIER CONTACT TO CONCRETE)

This detail is for general informational purposes only. The project design professional determines, in its sole discretion, whether this detail or a functionally equivalent detail is best suited for the project with respect to any architecture, engineering, and design requirements, including any local building code requirements. If this document is not reviewed and the product is not approved for use by a licensed design professional, the customer agrees that the detail may contain substantive flaws requiring correction, and hereby releases Tremco CPG Inc. from any and all liability related to the design and installation of the product. This detail is subject to change without notice. Contact Tremco to ensure you have the most recent version.

Non-Combustible Construction - Intermediate Floor



Detail: Nudura 6" (152mm) Form Unit, Steel Joist Floor System, Intermediate Floor Connection, Exterior Bearing Wall, Brick Veneer Finish		
Drawn by: TVC	Checked by: KS	Scale: 1:8
Revision #: 05	Revised by: KAB	Date: 3/13/2024

File Name:

D6B06



NUDURA 6" (152mm)
STANDARD FORM UNIT

TREMCO EXOAIR 230 OR
FUNCTIONAL EQUIVALENT

WET SET DOWELS TO MATCH
VERTICAL REINFORCEMENT
BETWEEN POUR OR AS
SPECIFIED

EXTERIOR FINISH
AS SPECIFIED

HORIZ/VERT REINFORCEMENT
AS PER CODE OR AS SPECIFIED
(SEE NOTE 1)

MIN. 1/2" (13mm) GYPSUM BOARD

FORM PANELS c/w INSERT
WEBS- CUT TO SUIT FLOOR
CONNECTION- ADDITIONAL
FORM SUPPORT AS REQUIRED

ALLOW FLOOR SLAB TO REST ON
TO BEARING WALL CONCRETE

EPS FOAM REMOVED AT JOIST
LOCATIONS ONLY TO ALLOW
JOIST PLACEMENT

PROPRIETARY STEEL
JOIST FLOOR SYSTEM

CEILING FINISH AS PER STEEL JOIST
MANUFACTURERS SPECIFICATION
(SEE NOTE 2)

MIN. 1/2" (13mm) GYPSUM BOARD

NOTES:

1) FOR OPTIMAL REINFORCEMENT PLACEMENT IN THE NUDURA FORM, SPACING OF HORIZONTAL REINFORCEMENT TO BE SPECIFIED AT 18" (457mm) O.C. AND VERTICAL REINFORCEMENT TO BE SPECIFIED AT MULTIPLES OF 8" (203mm) O.C. REFER TO NUDURA REINFORCEMENT PLACEMENT DETAILS.

2) WHERE GYPSUM BOARD IS REQUIRED TO COMPLETE FIRE RATED ASSEMBLY, EPS FOAM KERF CUT TO ENABLE CEILING FINISH TO PROVIDE THERMAL BARRIER CONTACT TO CONCRETE)

This detail is for general informational purposes only. The project design professional determines, in its sole discretion, whether this detail or a functionally equivalent detail is best suited for the project with respect to any architecture, engineering, and design requirements, including any local building code requirements. If this document is not reviewed and the product is not approved for use by a licensed design professional, the customer agrees that the detail may contain substantive flaws requiring correction, and hereby releases Tremco CPG Inc. from any and all liability related to the design and installation of the product. This detail is subject to change without notice. Contact Tremco to ensure you have the most recent version.

Non-Combustible Construction - Intermediate Floor

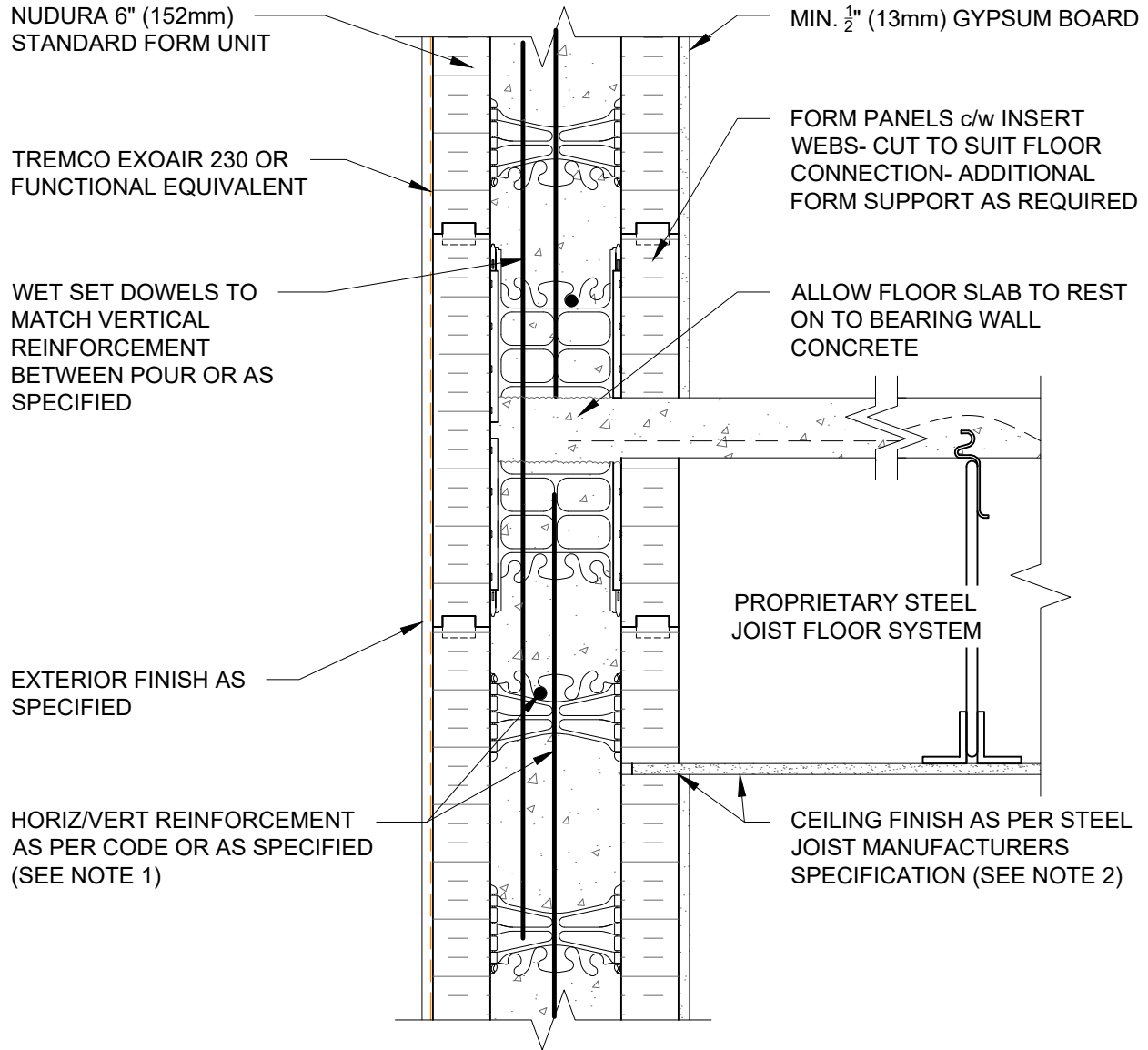


Detail: Nudura 6" (152mm) Form Unit, Steel Joist Floor System, Intermediate Floor Connection, Exterior Wall, Exterior Finish As Specified		
Drawn by: TVC	Checked by: KS	Scale: 1:8
Revision #: 05	Revised by: KAB	Date: 3/13/2024

File Name:

D6B09





- NOTES:
- 1) FOR OPTIMAL REINFORCEMENT PLACEMENT IN THE NUDURA FORM, SPACING OF HORIZONTAL REINFORCEMENT TO BE SPECIFIED AT 18" (457mm) O.C. AND VERTICAL REINFORCEMENT TO BE SPECIFIED AT MULTIPLES OF 8" (203mm) O.C. REFER TO NUDURA REINFORCEMENT PLACEMENT DETAILS.
 - 2) WHERE GYPSUM BOARD IS REQUIRED TO COMPLETE FIRE RATED ASSEMBLY, EPS FOAM KERF CUT TO ENABLE CEILING FINISH TO PROVIDE THERMAL BARRIER CONTACT TO CONCRETE)

This detail is for general informational purposes only. The project design professional determines, in its sole discretion, whether this detail or a functionally equivalent detail is best suited for the project with respect to any architecture, engineering, and design requirements, including any local building code requirements. If this document is not reviewed and the product is not approved for use by a licensed design professional, the customer agrees that the detail may contain substantive flaws requiring correction, and hereby releases Tremco CPG Inc. from any and all liability related to the design and installation of the product. This detail is subject to change without notice. Contact Tremco to ensure you have the most recent version.

Non-Combustible Construction - Intermediate Floor



Nudura Technical Support: 866-468-6299
International: +1 705-726-9499

Detail: Nudura 6" (152mm) Form Unit, Steel Joist Floor System, Intermediate Floor Connection, Exterior Non-Bearing Wall, Exterior Finish As Specified

Drawn by: TVC

Checked by: KS

Scale: 1:8

Revision #: 05

Revised by: KAB

Date: 3/13/2024

File Name:

D6B10



Construction Products Group

www.tremcocpg.com

FORM PANELS c/w INSERT
WEBS- CUT TO SUIT FLOOR
CONNECTION- ADDITIONAL
FORM SUPPORT AS
REQUIRED

TREMCO EXOAIR 230 OR
FUNCTIONAL EQUIVALENT

WET SET DOWELS FIELD
BENT INTO SLAB AS
SPECIFIED

U BRACKET ANCHOR INSERT

EXTERIOR FINISH AS
SPECIFIED

WET SET DOWELS TO MATCH
VERTICAL REINFORCEMENT
BETWEEN POUR OR AS
SPECIFIED

HORIZ/VERT REINFORCEMENT
AS PER CODE OR AS SPECIFIED

GYPSUM BOARD FINISHED/FIRE
STOP INSTALLED AT JOISTS AS
PER CODE

COMPOSITE STEEL DECK-SLAB
AND REINFORCEMENT AS
SPECIFIED

OWSJ

INTERIOR INSULATION REMOVED
AT JOIST LOCATIONS

MIN. 1/2" (13mm) GYPSUM BOARD

NUDURA 6" (152mm)
STANDARD FORM UNIT

NOTES:

1) FOR OPTIMAL REINFORCEMENT PLACEMENT IN THE NUDURA FORM,
SPACING OF HORIZONTAL REINFORCEMENT TO BE SPECIFIED AT 18"
(457mm) O.C. AND VERTICAL REINFORCEMENT TO BE SPECIFIED AT
MULTIPLES OF 8" (203mm) O.C. REFER TO NUDURA REINFORCEMENT
PLACEMENT DETAILS.

This detail is for general informational purposes only. The project design professional determines, in its sole discretion, whether this detail or a functionally equivalent detail is best suited for the project with respect to any architecture, engineering, and design requirements, including any local building code requirements. If this document is not reviewed and the product is not approved for use by a licensed design professional, the customer agrees that the detail may contain substantive flaws requiring correction, and hereby releases Tremco CPG Inc. from any and all liability related to the design and installation of the product. This detail is subject to change without notice. Contact Tremco to ensure you have the most recent version.

Non-Combustible Construction - Intermediate Floor



Nudura Technical Support: 866-468-6299
International: +1 705-726-9499

Detail: Nudura 6" (152mm) Form Unit, Composite Steel Deck-Slab Steel Joist On Ext. Bearing Wall, Intermediate Floor Connection, Exterior Finish As Specified

Drawn by: TVC

Checked by: KS

Scale: 1:8

Revision #: 05

Revised by: KAB

Date: 3/13/2024

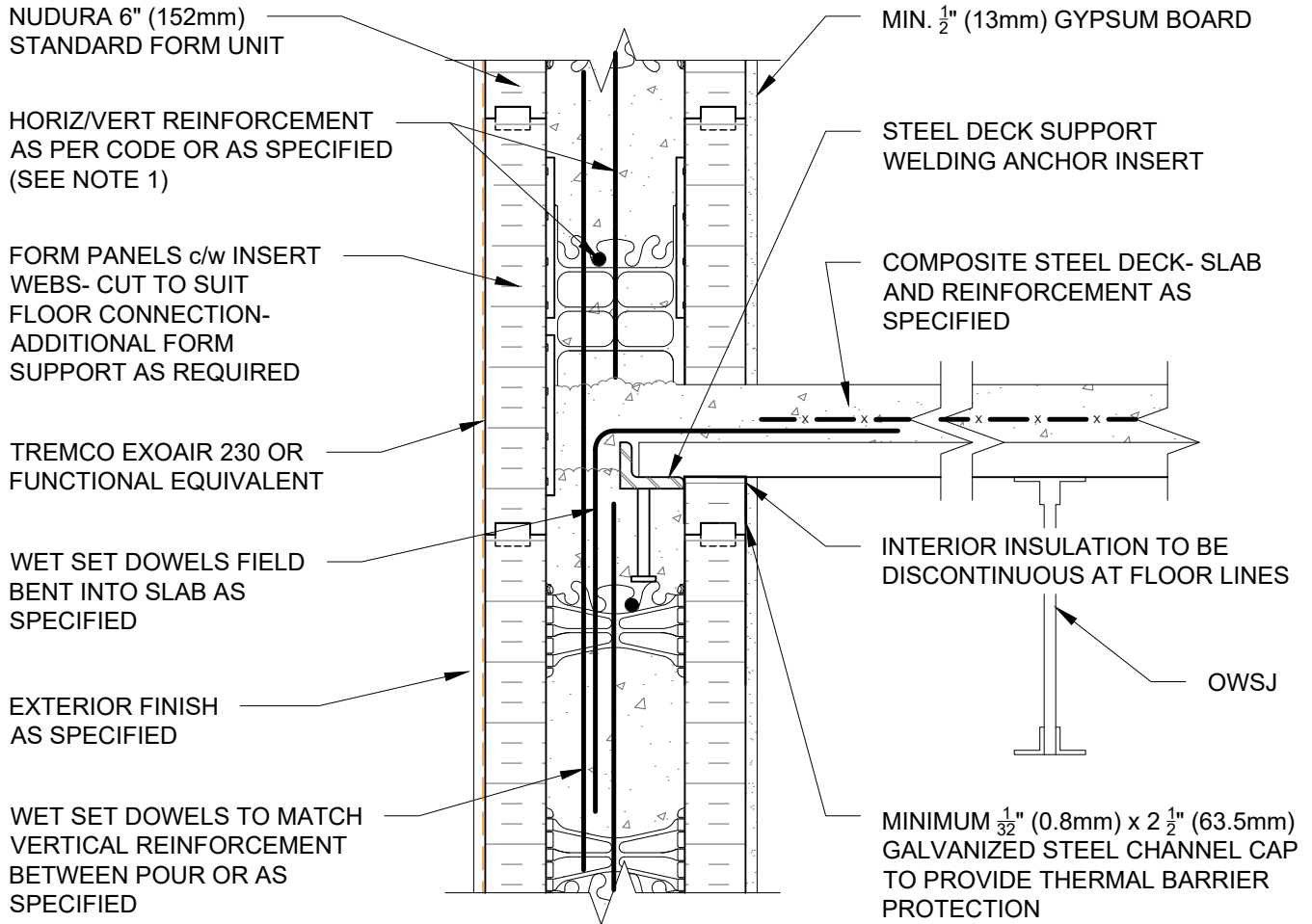
File Name:

D6C07



Construction Products Group

www.tremcocpg.com



NOTES:
 1) FOR OPTIMAL REINFORCEMENT PLACEMENT IN THE NUDURA FORM, SPACING OF HORIZONTAL REINFORCEMENT TO BE SPECIFIED AT 18" (457mm) O.C. AND VERTICAL REINFORCEMENT TO BE SPECIFIED AT MULTIPLES OF 8" (203mm) O.C. REFER TO NUDURA REINFORCEMENT PLACEMENT DETAILS.

This detail is for general informational purposes only. The project design professional determines, in its sole discretion, whether this detail or a functionally equivalent detail is best suited for the project with respect to any architecture, engineering, and design requirements, including any local building code requirements. If this document is not reviewed and the product is not approved for use by a licensed design professional, the customer agrees that the detail may contain substantive flaws requiring correction, and hereby releases Tremco CPG Inc. from any and all liability related to the design and installation of the product. This detail is subject to change without notice. Contact Tremco to ensure you have the most recent version.

Non-Combustible Construction - Intermediate Floor



Detail: Nudura 6" (152mm) Form Unit, Composite Steel Deck-Slab Steel Joist On Side Wall, Intermediate Floor Connection, Exterior Finish As Specified		
Drawn by: TVC	Checked by: KS	Scale: 1:8
Revision #: 06	Revised by: KAB	Date: 3/13/2024

File Name:
D6C08



BRICK VENEER c/w 1" (25mm)
AIR SPACE AND BRICK TIES

TREMCO EXOAIR 230 OR
FUNCTIONAL EQUIVALENT

FORM PANELS c/w INSERT
WEBS- CUT TO SUIT
FLOOR CONNECTION-
ADDITIONAL FORM
SUPPORT AS REQUIRED

WET SET DOWELS
FIELD BENT INTO SLAB
AS SPECIFIED

U BRACKET ANCHOR INSERT

WET SET DOWELS TO MATCH
VERTICAL REINFORCEMENT
BETWEEN POUR OR AS
SPECIFIED

HORIZ/VERT REINFORCEMENT
AS PER CODE OR AS SPECIFIED
(SEE NOTE 1)

NUDURA 6" (152mm)
STANDARD FORM UNIT

GYPSUM BOARD
FINISHED/FIRE STOP
INSTALLED AT JOISTS
AS PER CODE

COMPOSITE STEEL DECK-SLAB
AND REINFORCEMENT AS
SPECIFIED

OWSJ

INTERIOR INSULATION REMOVED
AT JOIST LOCATIONS

MIN. 1/2" (13mm) GYPSUM BOARD

NOTES:

1) FOR OPTIMAL REINFORCEMENT PLACEMENT IN THE NUDURA FORM, SPACING OF HORIZONTAL REINFORCEMENT TO BE SPECIFIED AT 18" (457mm) O.C. AND VERTICAL REINFORCEMENT TO BE SPECIFIED AT MULTIPLES OF 8" (203mm) O.C. REFER TO NUDURA REINFORCEMENT PLACEMENT DETAILS.

This detail is for general informational purposes only. The project design professional determines, in its sole discretion, whether this detail or a functionally equivalent detail is best suited for the project with respect to any architecture, engineering, and design requirements, including any local building code requirements. If this document is not reviewed and the product is not approved for use by a licensed design professional, the customer agrees that the detail may contain substantive flaws requiring correction, and hereby releases Tremco CPG Inc. from any and all liability related to the design and installation of the product. This detail is subject to change without notice. Contact Tremco to ensure you have the most recent version.

Non-Combustible Construction - Intermediate Floor



Nudura Technical Support: 866-468-6299
International: +1 705-726-9499

Detail: Nudura 6" (152mm) Form Unit, Composite Steel Deck-Slab, Steel Joists On
Ext Bearing Wall, Intermediate Floor Connection, Brick Veneer Finish

Drawn by: TVC

Checked by: KS

Scale: 1:8

Revision #: 08

Revised by: KAB

Date: 3/13/2024

File Name:

D6C09



Construction Products Group

www.tremcocpg.com

BRICK VENEER c/w 1" (25mm) AIR SPACE AND BRICK TIES

TREMCO EXOAIR 230 OR FUNCTIONAL EQUIVALENT

FORM PANELS c/w INSERT WEBS- CUT TO SUIT FLOOR CONNECTION- ADDITIONAL FORM SUPPORT AS REQUIRED

WET SET DOWELS FIELD BENT INTO SLAB AS SPECIFIED

HORIZ/VERT REINFORCEMENT AS PER CODE OR AS SPECIFIED (SEE NOTE 1)

NUDURA 6" (152mm) STANDARD FORM UNIT

WET SET DOWELS TO MATCH VERTICAL REINFORCEMENT BETWEEN POUR OR AS SPECIFIED

MIN. 1/2" (13mm) GYPSUM BOARD

STEEL DECK SUPPORT WELDING ANCHOR INSERT

COMPOSITE STEEL DECK- SLAB AND REINFORCEMENT AS SPECIFIED

INTERIOR INSULATION TO BE DISCONTINUOUS AT FLOOR LINES

OWSJ

MINIMUM 1/32" (0.8mm) x 2 1/2" (63.5mm) GALVANIZED STEEL CHANNEL CAP TO PROVIDE THERMAL BARRIER PROTECTION

NOTES:
 1) FOR OPTIMAL REINFORCEMENT PLACEMENT IN THE NUDURA FORM, SPACING OF HORIZONTAL REINFORCEMENT TO BE SPECIFIED AT 18" (457mm) O.C. AND VERTICAL REINFORCEMENT TO BE SPECIFIED AT MULTIPLES OF 8" (203mm) O.C. REFER TO NUDURA REINFORCEMENT PLACEMENT DETAILS.

This detail is for general informational purposes only. The project design professional determines, in its sole discretion, whether this detail or a functionally equivalent detail is best suited for the project with respect to any architecture, engineering, and design requirements, including any local building code requirements. If this document is not reviewed and the product is not approved for use by a licensed design professional, the customer agrees that the detail may contain substantive flaws requiring correction, and hereby releases Tremco CPG Inc. from any and all liability related to the design and installation of the product. This detail is subject to change without notice. Contact Tremco to ensure you have the most recent version.

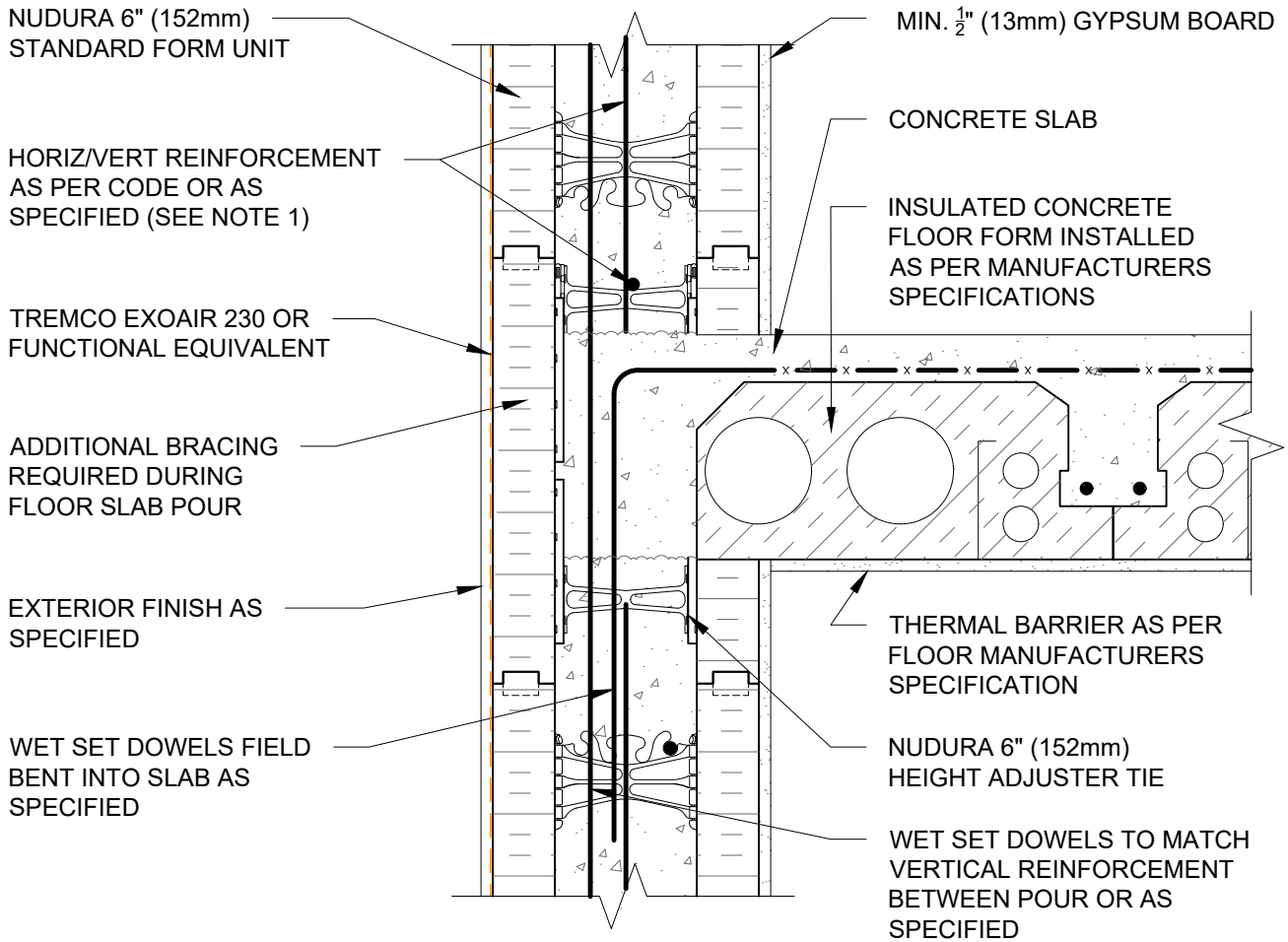
Non-Combustible Construction - Intermediate Floor



Detail: Nudura 6" (152mm) Form Unit, Composite Steel Deck-Slab, Steel Joists On Side Wall, Intermediate Floor Connection, Brick Veneer Finish		
Drawn by: TVC	Checked by: KS	Scale: 1:8
Revision #: 07	Revised by: KAB	Date: 3/13/2024

File Name:
D6C10





NOTES:
 1) FOR OPTIMAL REINFORCEMENT PLACEMENT IN THE NUDURA FORM, SPACING OF HORIZONTAL REINFORCEMENT TO BE SPECIFIED AT 18" (457mm) O.C. AND VERTICAL REINFORCEMENT TO BE SPECIFIED AT MULTIPLES OF 8" (203mm) O.C. REFER TO NUDURA REINFORCEMENT PLACEMENT DETAILS.

This detail is for general informational purposes only. The project design professional determines, in its sole discretion, whether this detail or a functionally equivalent detail is best suited for the project with respect to any architecture, engineering, and design requirements, including any local building code requirements. If this document is not reviewed and the product is not approved for use by a licensed design professional, the customer agrees that the detail may contain substantive flaws requiring correction, and hereby releases Tremco CPG Inc. from any and all liability related to the design and installation of the product. This detail is subject to change without notice. Contact Tremco to ensure you have the most recent version.

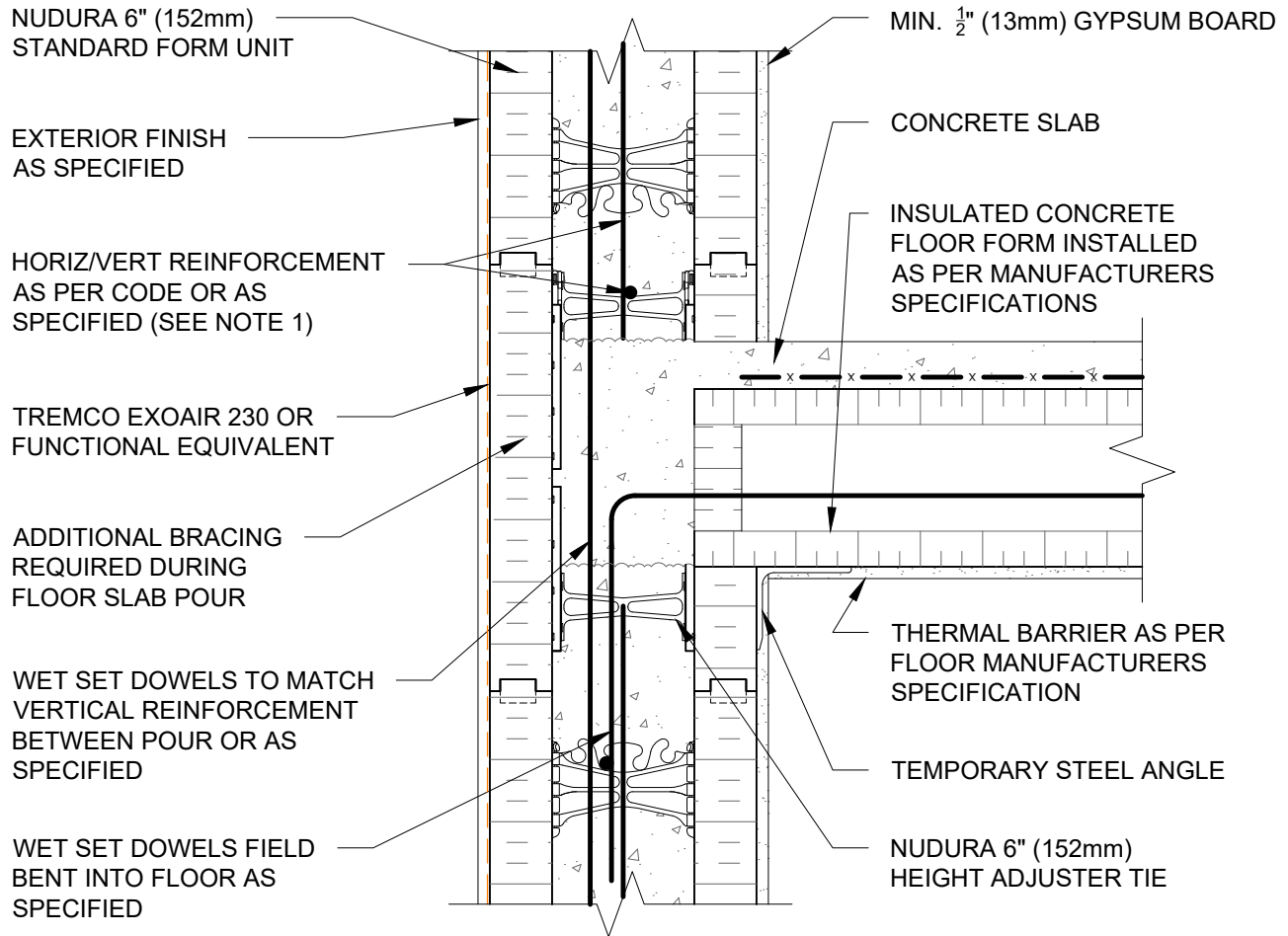
Non-Combustible Construction - Intermediate Floor



Detail: Nudura 6" (152mm) Form Unit, ICFS Connection, ICFS Resting On Form, Exterior Side Wall, Exterior Finish As Specified		
Drawn by: JN	Checked by: KS	Scale: 1:8
Revision #: 06	Revised by: KAB	Date: 3/13/2024

File Name:
D6D01





NOTES:
 1) FOR OPTIMAL REINFORCEMENT PLACEMENT IN THE NUDURA FORM, SPACING OF HORIZONTAL REINFORCEMENT TO BE SPECIFIED AT 18" (457mm) O.C. AND VERTICAL REINFORCEMENT TO BE SPECIFIED AT MULTIPLES OF 8" (203mm) O.C. REFER TO NUDURA REINFORCEMENT PLACEMENT DETAILS.

This detail is for general informational purposes only. The project design professional determines, in its sole discretion, whether this detail or a functionally equivalent detail is best suited for the project with respect to any architecture, engineering, and design requirements, including any local building code requirements. If this document is not reviewed and the product is not approved for use by a licensed design professional, the customer agrees that the detail may contain substantive flaws requiring correction, and hereby releases Tremco CPG Inc. from any and all liability related to the design and installation of the product. This detail is subject to change without notice. Contact Tremco to ensure you have the most recent version.

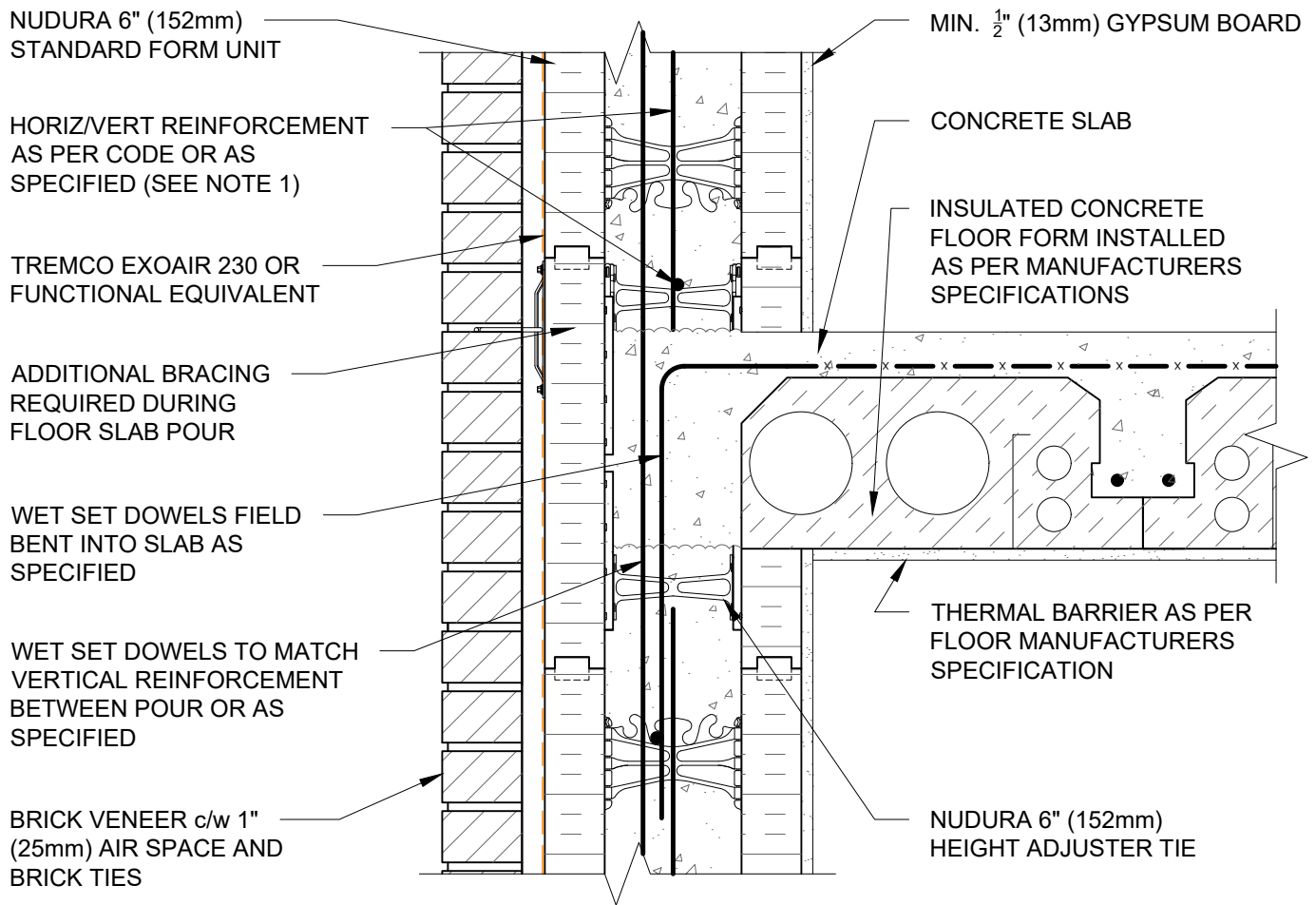
Non-Combustible Construction - Intermediate Floor



Detail: Nudura 6" (152mm) Form Unit, ICFS Connection, ICFS Resting On Form, Exterior Bearing Wall, Exterior Finish As Specified		
Drawn by: JN	Checked by: KS	Scale: 1:8
Revision #: 06	Revised by: KAB	Date: 3/13/2024

File Name:
D6D02





NOTES:
 1) FOR OPTIMAL REINFORCEMENT PLACEMENT IN THE NUDURA FORM, SPACING OF HORIZONTAL REINFORCEMENT TO BE SPECIFIED AT 18" (457mm) O.C. AND VERTICAL REINFORCEMENT TO BE SPECIFIED AT MULTIPLES OF 8" (203mm) O.C. REFER TO NUDURA REINFORCEMENT PLACEMENT DETAILS.

This detail is for general informational purposes only. The project design professional determines, in its sole discretion, whether this detail or a functionally equivalent detail is best suited for the project with respect to any architecture, engineering, and design requirements, including any local building code requirements. If this document is not reviewed and the product is not approved for use by a licensed design professional, the customer agrees that the detail may contain substantive flaws requiring correction, and hereby releases Tremco CPG Inc. from any and all liability related to the design and installation of the product. This detail is subject to change without notice. Contact Tremco to ensure you have the most recent version.

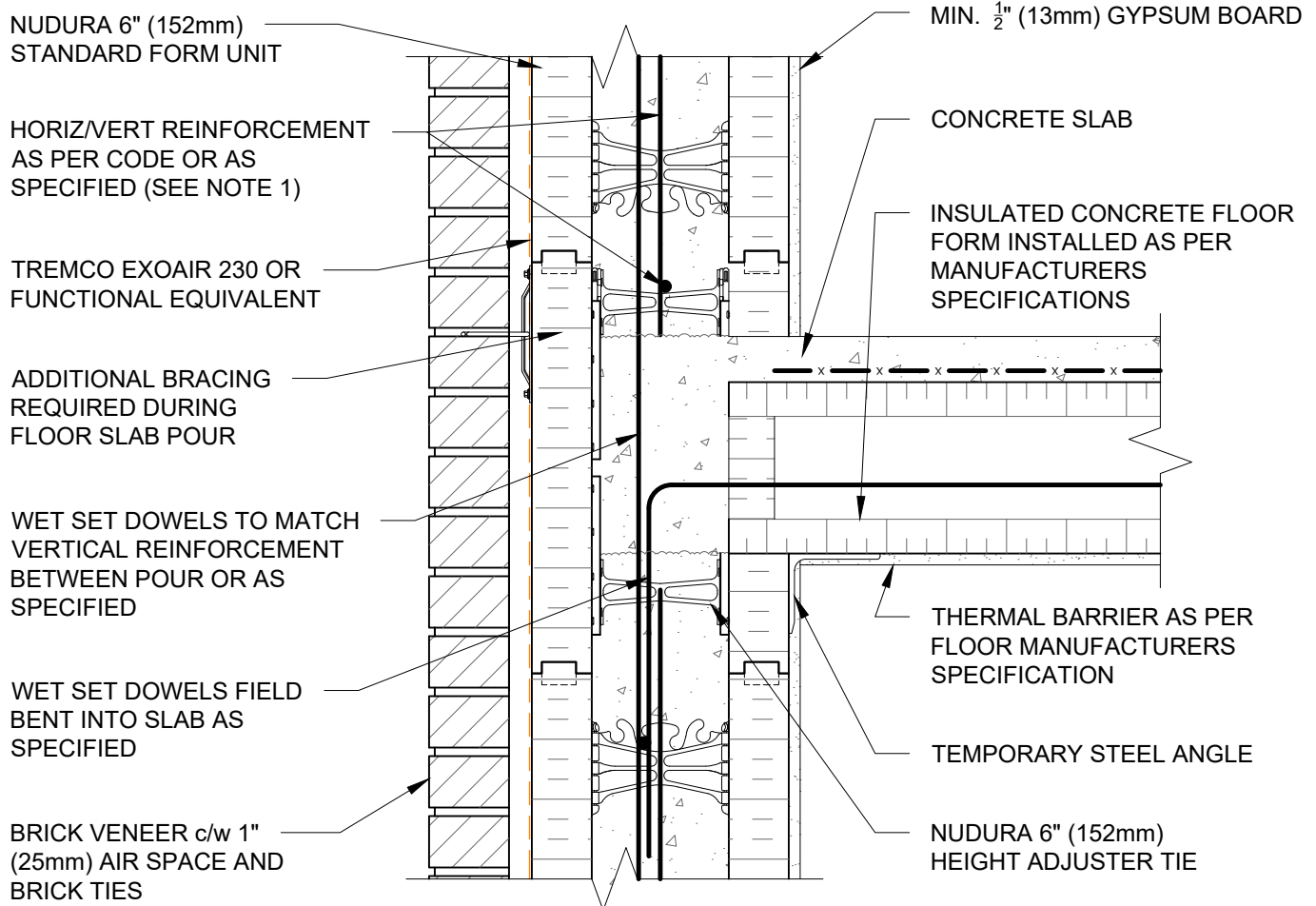
Non-Combustible Construction - Intermediate Floor



Detail: Nudura 6" (152mm) Form Unit, ICFS Connection, ICFS Resting On Form, Exterior Side Wall, Brick Veneer Finish		
Drawn by: JN	Checked by: KS	Scale: 1:8
Revision #: 06	Revised by: KAB	Date: 3/13/2024

File Name:
D6D05





NOTES:
 1) FOR OPTIMAL REINFORCEMENT PLACEMENT IN THE NUDURA FORM, SPACING OF HORIZONTAL REINFORCEMENT TO BE SPECIFIED AT 18" (457mm) O.C. AND VERTICAL REINFORCEMENT TO BE SPECIFIED AT MULTIPLES OF 8" (203mm) O.C. REFER TO NUDURA REINFORCEMENT PLACEMENT DETAILS.

This detail is for general informational purposes only. The project design professional determines, in its sole discretion, whether this detail or a functionally equivalent detail is best suited for the project with respect to any architecture, engineering, and design requirements, including any local building code requirements. If this document is not reviewed and the product is not approved for use by a licensed design professional, the customer agrees that the detail may contain substantive flaws requiring correction, and hereby releases Tremco CPG Inc. from any and all liability related to the design and installation of the product. This detail is subject to change without notice. Contact Tremco to ensure you have the most recent version.

Non-Combustible Construction - Intermediate Floor



Detail: Nudura 6" (152mm) Form Unit, ICFS Connection, ICFS Resting On Form, Exterior Bearing Wall, Brick Veneer Finish		
Drawn by: TVC	Checked by: KS	Scale: 1:8
Revision #: 06	Revised by: KAB	Date: 3/13/2024

File Name:
D6D06



TREMCO EXOAIR 230 OR FUNCTIONAL EQUIVALENT

FORM PANELS c/w INSERT WEBS- CUT TO SUIT FLOOR CONNECTION- ADDITIONAL FORM SUPPORT AS REQUIRED

BRICK VENEER c/w 1" (25mm) AIR SPACE AND BRICK TIES

WET SET DOWELS TO MATCH VERTICAL REINFORCEMENT BETWEEN POUR OR AS SPECIFIED

NUDURA 6" (152mm) STANDARD FORM UNIT

MIN. 1/2" (13mm) GYPSUM BOARD

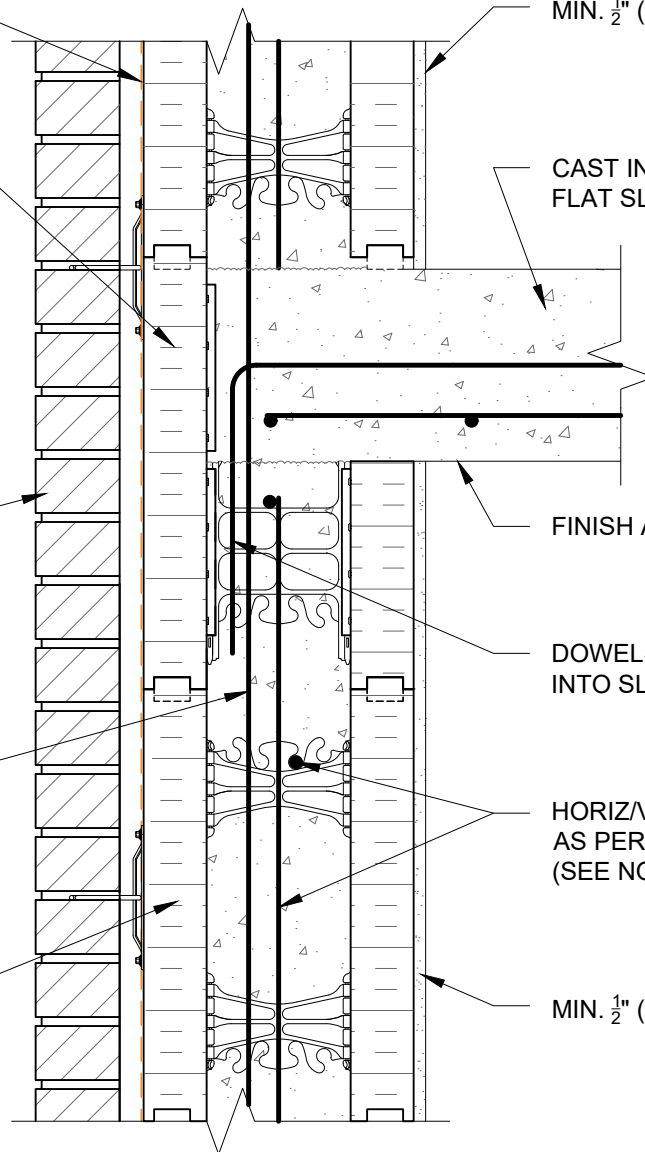
CAST IN PLACE CONCRETE FLAT SLAB

FINISH AS SPECIFIED

DOWELS FIELD BENT INTO SLAB AS SPECIFIED

HORIZ/VERT REINFORCEMENT AS PER CODE OR AS SPECIFIED (SEE NOTE 1)

MIN. 1/2" (13mm) GYPSUM BOARD



NOTES:
 1) FOR OPTIMAL REINFORCEMENT PLACEMENT IN THE NUDURA FORM, SPACING OF HORIZONTAL REINFORCEMENT TO BE SPECIFIED AT 18" (457mm) O.C. AND VERTICAL REINFORCEMENT TO BE SPECIFIED AT MULTIPLES OF 8" (203mm) O.C. REFER TO NUDURA REINFORCEMENT PLACEMENT DETAILS.

This detail is for general informational purposes only. The project design professional determines, in its sole discretion, whether this detail or a functionally equivalent detail is best suited for the project with respect to any architecture, engineering, and design requirements, including any local building code requirements. If this document is not reviewed and the product is not approved for use by a licensed design professional, the customer agrees that the detail may contain substantive flaws requiring correction, and hereby releases Tremco CPG Inc. from any and all liability related to the design and installation of the product. This detail is subject to change without notice. Contact Tremco to ensure you have the most recent version.

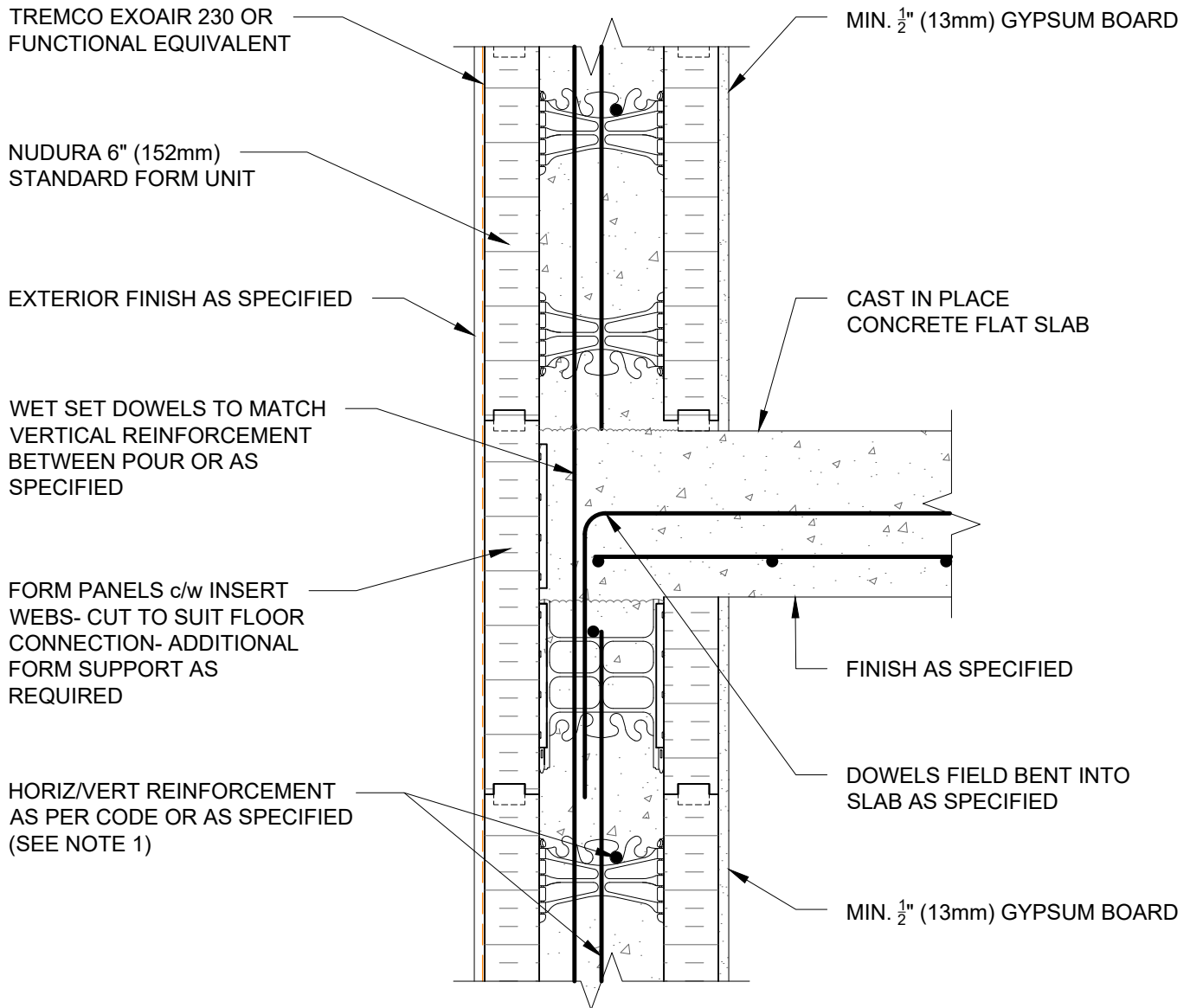
Non-Combustible Construction - Intermediate Floor



Detail: Nudura 6" (152mm) Form Unit, Concrete Flat Plate, Intermediate Floor Connection, Bearing Wall Detail, Brick Veneer Finish		
Drawn by: KS	Checked by: KS	Scale: 1:8
Revision #: 01	Revised by: KAB	Date: 3/13/2024

File Name:
D6E03





NOTES:
 1) FOR OPTIMAL REINFORCEMENT PLACEMENT IN THE NUDURA FORM, SPACING OF HORIZONTAL REINFORCEMENT TO BE SPECIFIED AT 18" (457mm) O.C. AND VERTICAL REINFORCEMENT TO BE SPECIFIED AT MULTIPLES OF 8" (203mm) O.C. REFER TO NUDURA REINFORCEMENT PLACEMENT DETAILS.

This detail is for general informational purposes only. The project design professional determines, in its sole discretion, whether this detail or a functionally equivalent detail is best suited for the project with respect to any architecture, engineering, and design requirements, including any local building code requirements. If this document is not reviewed and the product is not approved for use by a licensed design professional, the customer agrees that the detail may contain substantive flaws requiring correction, and hereby releases Tremco CPG Inc. from any and all liability related to the design and installation of the product. This detail is subject to change without notice. Contact Tremco to ensure you have the most recent version.

Non-Combustible Construction - Intermediate Floor



Detail: Nudura 6" (152mm) Form Unit, Concrete Flat Plate, Intermediate Floor Connection, Exterior Bearing Wall Detail, Exterior Finish Specified		
Drawn by: KS	Checked by: KS	Scale: 1:8
Revision #: 01	Revised by: KAB	Date: 3/13/2024

File Name:
D6E04

